



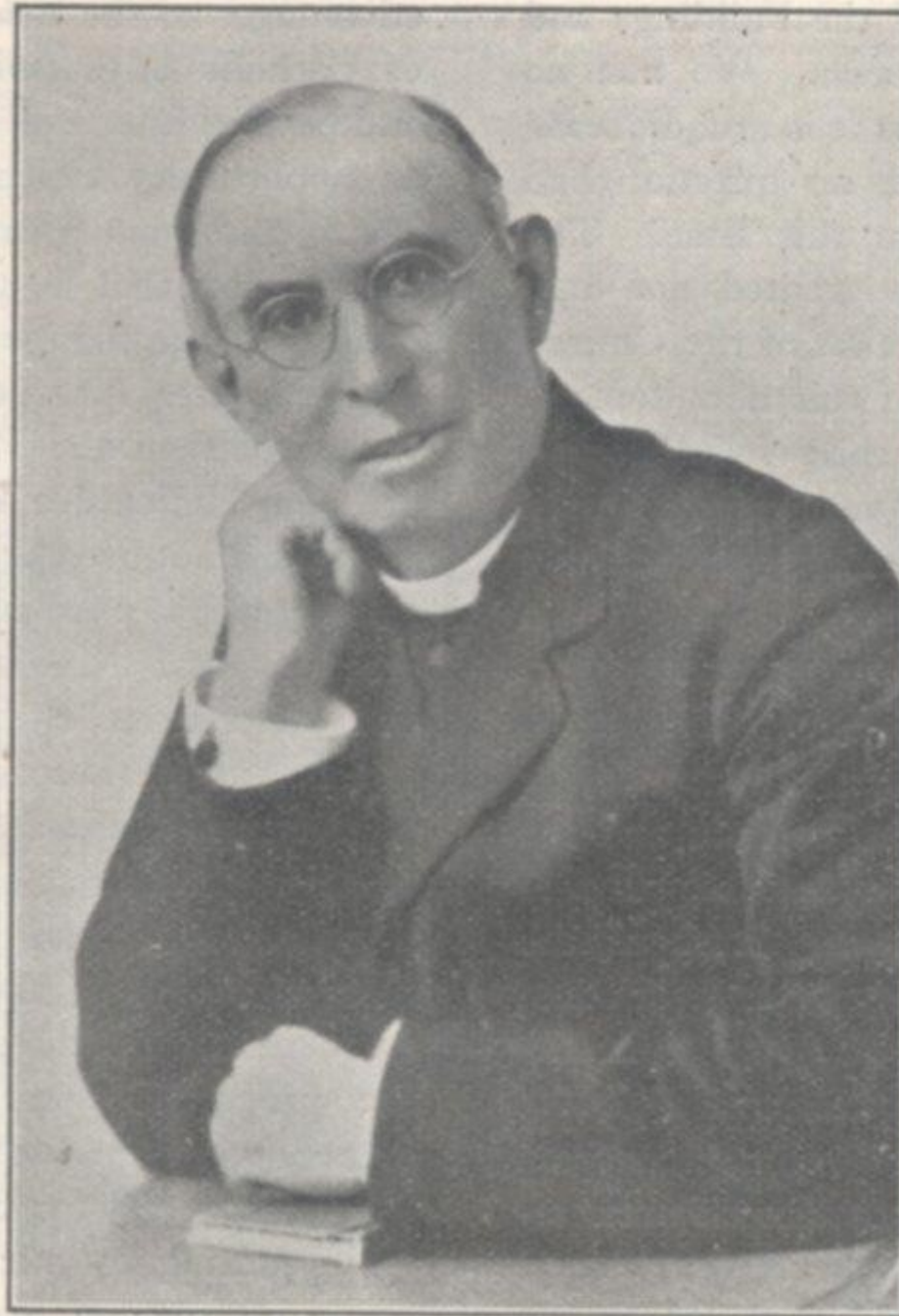
OLD ST. EDWARD'S.



T. HORAN, R. BRENNAN, B. KEENAN, C. BRENNAN, M. MINISTER, K. KEITH.
F. CAMOUS, P. PILLING, D. SMERDON (Capt.), P. CARROLL, T. O'NEILL.



P. RICHARDSON, K. MCGUINNESS, T. CROSBIE, J. LUDDEN, J. SUPPLE, C. MERCER.
W. MCGEAGH, R. WORTHINGTON, V. JACK (Capt.), T. HORAN, L. CONNORS.



REV. BR. W. D. FORDE.



PUPIL TEACHERS' CENTRE, GT. MERSEY Street.

as Chairman of the Governors of St. Edward's, and asked if there was any likelihood of the Christian Brothers selling to the Housing Committee St. Edward's and its site of over six acres. As the College had been so permanently established in Everton, and such



REV. BR. C. S. LEAHY.

a large amount of money had been expended on it, Canon O'Connell told him he did not think the Christian Brothers would consider such a scheme. A few weeks later, as it was almost impossible to find suitable housing sites in the heart of the City, the same official enquired again. The Canon said he would enquire; and he called on Br. Roche who, to his surprise, welcomed the idea and undertook to communicate at once with his Superiors.

To a letter detailing all the advantages of the opportunity that had presented itself of establishing a new and up-to-date school in more suitable surroundings the reply was completely non-committal, but at the same time permitted the preliminary enquiries to be entered upon as to the conditions of purchase, the effect of a change of position on the prospects of the School, and the likelihood of the Archbishop favouring the Scheme which of course was vital to any action being taken.

Mr. Frank Kirby, of Messrs. Edmund Kirby and Sons, afterwards appointed Official



RT. REV. MONSIGNOR PINNINGTON.

Arbitrator for the North of England, acted as our Surveyor and negotiator with the Corporation. To them and to us it was



MOST REV. ARCHBISHOP WHITESIDE.