

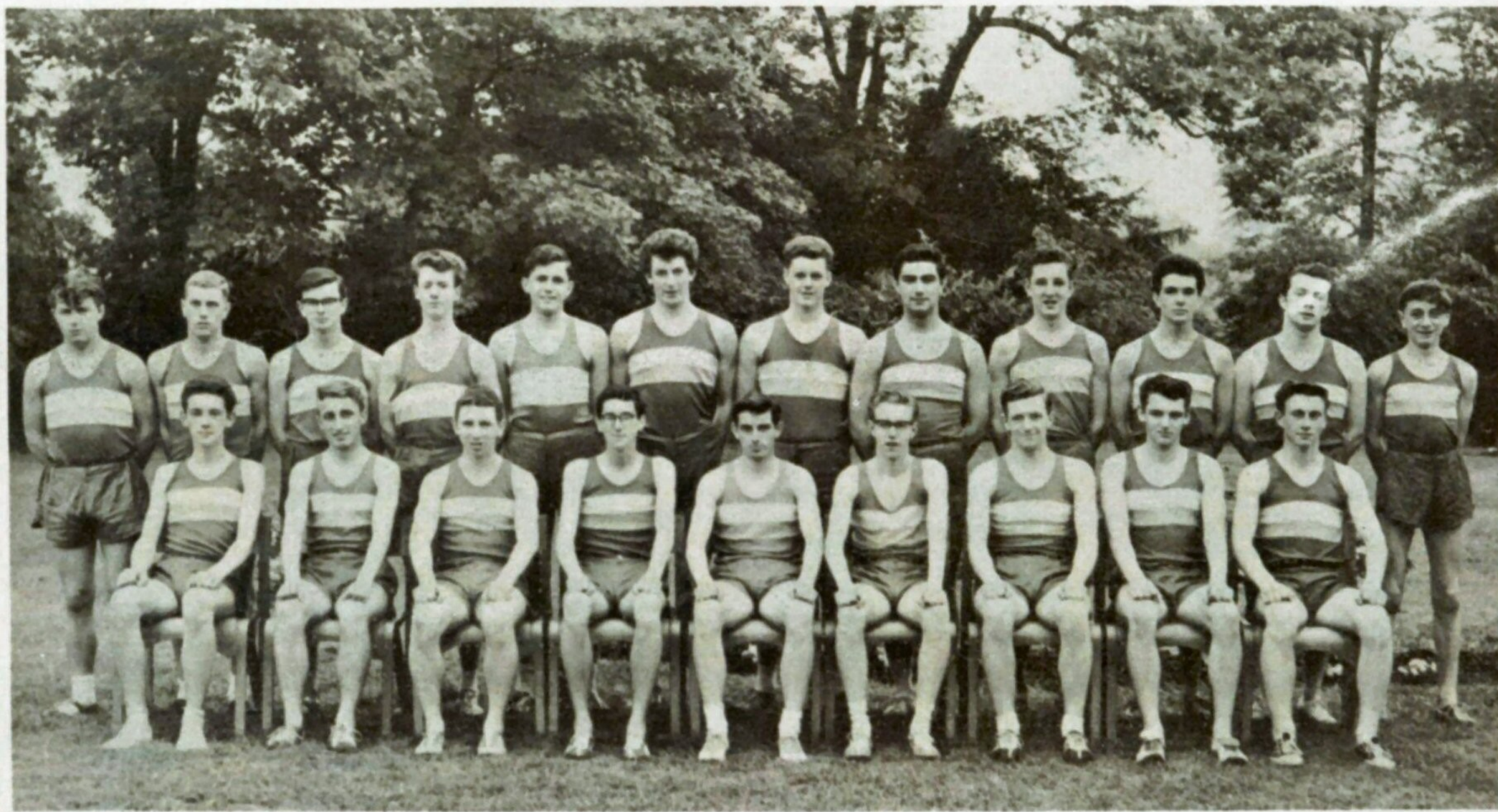


JUNIOR ATHLETICS TEAM 1962

Back Row (left to right): S. Wardle; B. Swords; A. Matheson; W. Kelly; C. Conway; B. Sullivan; J. Curran;
B. Rudd; E. Johnson; P. Kelly; M. Short; A. Crosby; P. Gillespie.

Front Row (left to right): S. Pratt; J. Massey; A. Moorhead; J. Latham; B. Nevin; J. Wall; J. Murphy;
R. Mathers; Spruce.

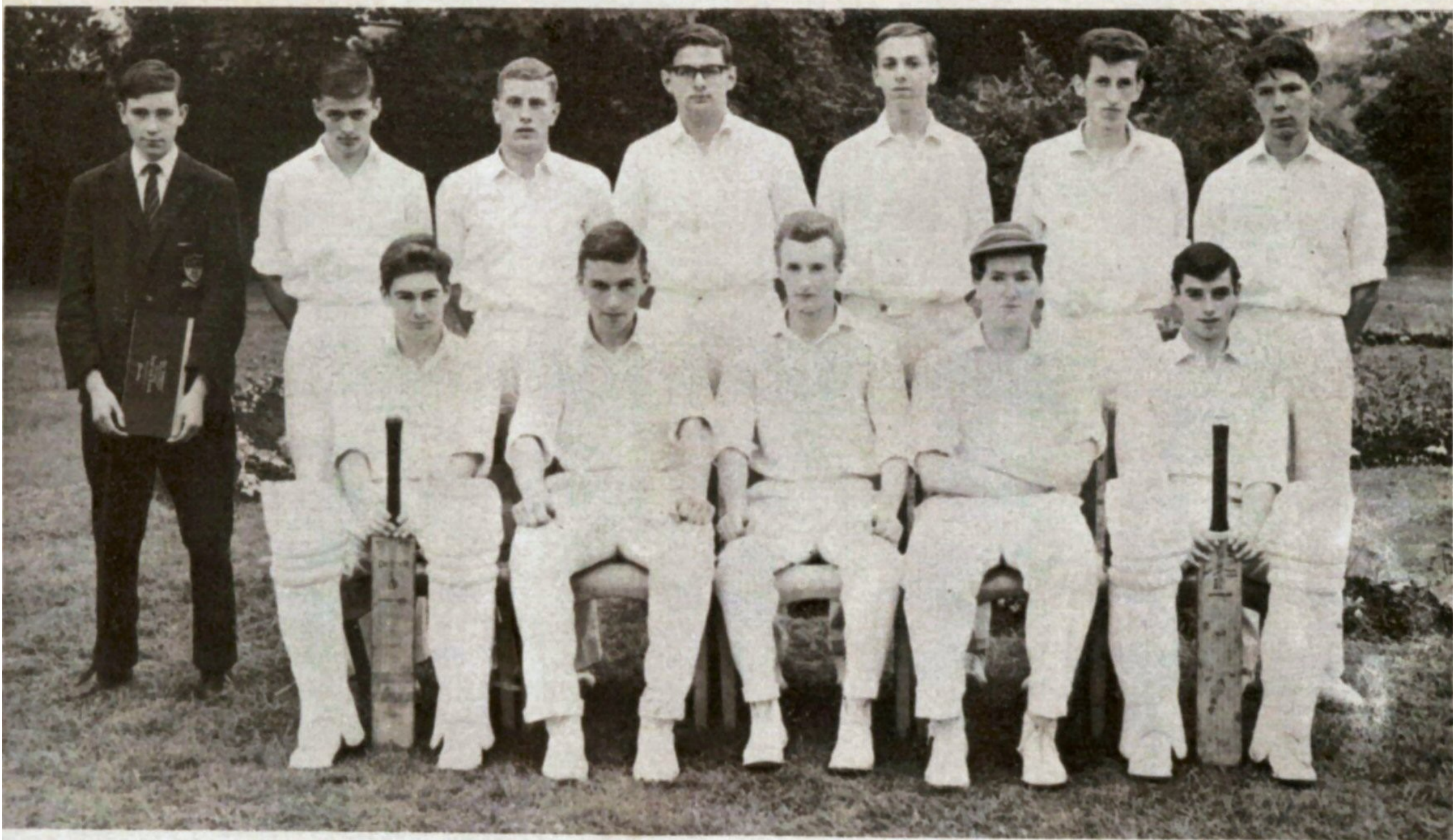
Liverpool City Champions: A. Moorhead; B. Nevin; J. Wall; B. Sullivan; B. Rudd.



SENIOR ATHLETICS TEAM 1962

Standing: B. Kelly; A. Brown; P. Hill; D. Morgan; R. Roach; P. Cassidy (C); P. Dunn; W. Spenser; M. Stevenson;
P. Hamilton; G. Hale; J. Dickman.

Seated: D. Lundy; P. Connor; E. L. Rudd; W. Tone; M. Gilbert (Captain) (C, M); M. Fearon; S. Sunderland; J. Mills.
Merseyside Grammar School Champions Bro. Gibbons Shield County Champions
C — County M — Merseyside G.S.



1st XI 1961-62

Standing: K. Downes (Scorer); J. Quirke; A. Brown; L. Montague; D. Brady; E. Deane; S. Bird.
Seated: P. Donnelly; M. Taylor; M. England (Captain); A. Lavery; J. N. Dodds.



1st XV 1961-62

Standing: F. E. Toolan; R. Blakeman (G); D. Brady (G); P. Cassidy; W. Spenser (C, G, P); M. Taylor (L, C, G, P);
J. W. A. Reekers; J. Carney (G, P).

Seated: P. Connor; M. P. England (G); A. Brown (Vice-Captain) (L, P, C); E. L. Rudd (Captain) (L, P, C);
S. Sunderland (C); P. Kilfoyle (G); D. Moss.

Played 18; Won 18; Lost 0; Drawn 0

P — Public Schools

G — Grammar Schools

C — Colours

L — Lancashire



SCHOOL PREFECTS 1961-62

Top Row: E. L. Lomax; M. Fearon; M. Gilbert; B. Rourke; E. L. Rudd; J. Carney; A. Langley; F. E. Toolan;
A. Brown; P. Hill.

Bottom Row: W. Taylor; R. Blakeman; M. T. Hughes; C. Burke; P. E. Duffy (Head Boy); S. Sunderland;
W. Shannon; P. Fletcher; G. Walker.

C.I. EDWARDIAN ASSOCIATION

Presentations to Mr. J. Curtin (deceased) and Mr. W. H. Rowe, Old Boys of the School, after fifty
years service on the teaching staff

7th May 1962



The Lord Mayor
(Ald. P. McKernan)

The Late
Mr. Curtin

Col. J. G. Bryson
(President
C.I. Ed. Assoc.)

Mr. Rowe

Bro. P. Curran
(Provincial)

Bro. M. C. Wall
(Representing
Archbishop Heenan)